



TABLE OF CONTENTS

RiverRun Cabinetry

General Info GENERAL INFORMATION

| | |
|----------------------------------------------------------|-------|
| • Team Directory | GI-1 |
| • Getting Started | GI-3 |
| • New Account Set-Up | GI-3 |
| • Dealer Site Registration | GI-3 |
| • Online Order Site Access | GI-3 |
| • Customer Service Contact Information | GI-3 |
| • Step-By-Step Order Process | GI-4 |
| • Placing Orders | |
| • Online Ordering | GI-5 |
| • Emailing 2020 Design (KIT) Files | GI-5 |
| • Design Software Options | GI-5 |
| • Expedited Orders | GI-5 |
| • Cancellation Policy | GI-6 |
| • Return Checks Policy | GI-6 |
| • Shipping Program Information | |
| • Cycle Ship Program | GI-7 |
| • Calculating Freight Costs (LTL / Non-Cycle Ship) | GI-7 |
| • Shipping Address Changes | GI-7 |
| • Registering New Ship To Locations | GI-8 |
| • Carriers | GI-8 |
| • Pick Ups | GI-8 |
| • Missed Deliveries | GI-8 |
| • Missing Item From Delivery/Shipment | GI-8 |
| • Damages & Warranties Replacement Program | GI-9 |
| • Five Year Limited Warranty | GI-10 |

Specs & Finishes CABINET SPECS & FINISHES

| | |
|---------------------------------------------------------|------|
| • General Product Notes | SF-1 |
| • Standard Materials and Construction Information | SF-2 |
| • Wall Cabinet Construction | SF-3 |
| • Base Cabinet Construction | SF-4 |

(continued on next page)

CABINET SPECS & FINISHES *(continued)*

| | |
|---------------------------------------------|-----------|
| • Door Styles & Finishes Availability | SF-5 |
| • Cambridge Doors | SF-6 |
| • Jefferson Doors | SF-7 |
| • Dalton Doors | SF-8 |
| • Parkview Doors | SF-9 |
| • StoneRidge Doors | SF-10 |
| • Hampton Door | SF-11 |
| • Door Sizes | SF12 - 14 |
| • Drawer Front Sizes | SF-15 |
| • Cabinet & Vanity Opening Dimensions | SF-16 |

CUSTOM MODIFICATIONS

| | |
|--------------------------------------------------------------------------------------------------------|---------|
| • Modification Descriptions & Images | CM1 - 6 |
| • Reduced Depth (RD) | CM-1 |
| • Increased Depth (ID) | CM-1 |
| • Recess Toe Kick on Right <u>or</u> Left <u>or</u> Back (BTKR or L or B) | CM-1 |
| • Recess Toe Kick on Right <u>and</u> Left (BTKRL) | CM-1 |
| • Toe Kick Removed (BTKN) | CM-2 |
| • Add Toe Kick to Wall with Toe Kick Space at Front Only (WTKF) | CM-2 |
| • Add Toe Kick to Wall with Toe Kick Space to Right <u>or</u> Left (WTKR or L) | CM-2 |
| • Add Toe Kick to Wall with Toe Kick Space to Right <u>and</u> Left (WTKRL) | CM-2 |
| • Add Toe Kick to Wall with Toe Kick Space to Front <u>and</u> Right <u>or</u> Left (WTKFR or L) | CM-2 |
| • Add Toe Kick to Wall with Toe Kick Space to Front, Right <u>and</u> Left (WTKFRL) | CM-3 |
| • Tri-Pack: Face Frame, Drawer Front and Door Only (TP) | CM-3 |
| • Box Only (BO) | CM-3 |
| • No Fronts (NOFRONTS) | CM-3 |
| • Finished Interior (FI) | CM-3 |
| • Finished Interior Tall (FIT) | CM-4 |
| • Pipe Chase Cut-Out on Right <u>or</u> Left Corner (PCR or L) | CM-4 |
| • Pipe Chase Cut-Out on Middle (PCM) | CM-4 |
| • Install Extended Stile on Right <u>or</u> Left (ESR or L) | CM-4 |
| • Install Extended Stile on Right <u>and</u> Left (ESRL) | CM-4 |
| • Peninsula Cabinet (PN) | CM-5 |
| • Wall End Panels (WEP) & Base End Panels (BEP) Factory Installed | CM-5 |
| • Install Full Depth Shelf (FDS) | CM-5 |
| • Install Second Shelf (2SH) | CM-5 |
| • Prep For Glass (PG) | CM-5 |
| • Reversed Base Cabinet Drawer (BD) | CM-6 |
| • Finished Ends | CM-6 |

(continued on next page)



TEAM DIRECTORY

GENERAL INFORMATION

| <u>NAME</u> | <u>TITLE/RESPONSIBILITY</u> | <u>EXT</u> | <u>EMAIL</u> |
|---------------------------|--------------------------------------------|------------------|---------------------------------------|
| Customer Service..... | General Inquiries | 540-438-5973 ... | CustomerService@RiverRunCabinetry.com |
| Order Inquiries | (for items not on Online Order Site) | | Order@RiverRunCabinetry.com |
| 2020 Kit File Order | Submitting 2020 KIT files/orders | | 2020Order@RiverRunCabinetry.com |

CUSTOMER SERVICE

| | | | |
|-----------------------|--------------------------------|-----------|--------------------------------|
| Dwight Blakey..... | Customer Service Manager | 430 | DBlakey@ClassicDistribution.us |
| Anne Arehart | Customer Service Rep | 452 | AArehart@RiverRunCabinetry.com |
| Kimberly Goodman | Customer Service Rep | 463 | KGoodman@RiverRunCabinetry.com |

SHIPPING

| | | | |
|------------------|------------------------|-----------|--------------------------------|
| Jim Miller | Shipping Dispatch..... | 323 | JMiller@ClassicDistribution.us |
|------------------|------------------------|-----------|--------------------------------|

ACCOUNTING

| | | | |
|------------------------|-----------------------------|-----------|--------------------------------|
| Ramona "Mona" Moyers.. | Jr. Accountant (AR/AP)..... | 444 | RMoyers@ClassicDistribution.us |
|------------------------|-----------------------------|-----------|--------------------------------|

SALES & MARKETING

| | | | |
|-----------------------|-----------------------------|-----------|-----------------------------------|
| Jeff Diener | National Sales Manager..... | 100 | JDiener@RiverRunCabinetry.com |
| Carol Swinehart | Marketing Manager | 433 | CSwinehart@ClassicDistribution.us |



PLACING ORDERS

RiverRun Cabinetry

ONLINE ORDERING

- Visit: ***orders.riverruncabinetry.com***
- Our Online Order Site was launched in early Sept. 2021, to work seamlessly with our new ERP system, 2020 Insight, and the 2020 Design software.
- First time users of the new site, **MUST** click “register here” before logging in. Old accounts from the previous site will not work. Your DEALER CODE is needed to complete the registration form. (The Dealer Code is the Username from the old Online Order site and was emailed to the dealer when the account was originally set up.) Contact Customer Service if you do not have your Dealer Code.
- A *Quick Start Reference Guide* (PDF), located on the Dealer site, is a helpful tool to guide you through the new Online Order site.

EMAILING 2020 DESIGN (KIT) FILES

- Dealers need to email Carol Swinehart at cswinehart@classicdistribution.us the following information on each person/designer that will be sending 2020 KIT files as RiverRun orders:
 - Name (First and Last)
 - Email address
 - Company Name
- RiverRun staff will set up these contacts to be able to place orders. Dealers will be notified when they are able to place their first order, via their 2020 KIT file.
- Designers must use the most recent RiverRun/2020 Design catalog available. See the Dealer site for the most recent catalog.
- Approved dealers should send 2020 KIT file orders to: ***2020order@riverruncabinetry.com***

DESIGN SOFTWARE OPTIONS

- 2020 Catalog is available on our Dealer site. Go to the 2020 Catalog link in the main menu for a link to the latest catalog.
- ProKitchen Catalog is available on the ProKitchen website at: <https://www.prokitchensoftware.com/prokitchen-online/conf/riverrun>.

EXPEDITE ORDERS

- Depending on current production demands, RiverRun may not be able to expedite orders during certain periods of the year. Contact Customer Service to see if your order can be expedited.
- There is a 30% upcharge for these orders.

RETURNS & CANCELLATIONS

- Once an order is approved and has not been placed into production there will be a 25% change fee added to the item/items being changed.
- Order cancellations and/or changes will not be accepted after an order has been placed into production.
- Any item with standard modifications or custom cabinets may not be changed once approved.
- Unpaid orders will be canceled after 3 weeks.
- Returns are not accepted.

RETURNED CHECKS POLICY

- Insufficient funds payment returns will incur a \$30 processing fee.



SHIPPING PROGRAM

RiverRun Cabinetry

CYCLE SHIP PROGRAM

- This program offers our dealers better service with regular scheduled deliveries on our trucks, fewer shipping damages and reduced shipping costs with a landed multiplier. Contact your Sales Rep or Customer Service to see if you qualify for this program. (Certain restrictions apply.)
- The majority of our dealers use this program as long as they meet the following delivery parameters:
 - ☐ Dealers will need to be able to receive delivery from a 70' truck (cab + trailer)
 - ☐ Delivery address must be serviced by the customer to unload cabinets off the back of the trailer
 - ☐ For Job site delivery needs, please consult Customer Service for available options.
- Current Cycle Ship Programs include the following areas (subject to change):
 - ☐ VMD - VA, MD, DE
 - ☐ Northeast - eastern PA, NJ, NY, CT, RI, MA, VT, NH
 - ☐ Southeast - NC, SC, GA, FL, AL
 - ☐ Prairie - southern WV, KY, TN, IL, southern WI, IA, MO, NE, KS, eastern CO
 - ☐ Midwest - MI, OH, western PA
- \$250 additional charge for all deliveries to metro NYC (NY, NJ, LI)
- For orders under \$1,500 an additional \$150 cycle ship fee will be added to your freight costs by Customer Service after the order is placed. (This EXCLUDES items such as Sales Aids and most Trim items, that can be shipped via FedEx.) You can avoid this fee by either adding items to this order or placing another order for delivery at the same time.
- Freight Surcharges may be added to all orders (including pick-up) to cover inbound freight costs

CALCULATING FREIGHT COSTS FOR LTL SHIPMENTS (NON-CYCLE SHIP ORDERS)

- For dealers unable to use our Cycle Ship Programs, a freight grid will be created for you when your account is set up. Freight costs are based on the weight of your order and its destination.
- Customer Service will calculate orders that weigh less than 500 lbs or greater than 3000 lbs.

SHIPPING ADDRESS CHANGES

- Changes to a shipping address after order confirmation will result in possible shipping delays and administrative fees.

REGISTERING NEW SHIP TO LOCATIONS

- Contact Customer Service to set up new Ship To addresses. Please allow at least two business days for new addresses to be approved and set up in your account.
- If you are shipping to a new address that has not yet been approved, Customer Service will calculate the freight costs after you submit the order and will bill freight separately.
- Please notify Customer Service if ship to addresses require any of the following services.
(LTL companies may charge higher fees on site, direct to you, if these are not noted prior to delivery.)
RiverRun will invoice customers for any accessorial fees incurred at time of shipment. Unpaid fees will result in a block on the account. Customers should address disputed fees directly with LTL companies.
 - ☐ Notification of delivery beyond tracking number
 - ☐ Lift gate services (required if you do not have two people to unload cabinets off the back of the truck OR a truck height dock)
 - ☐ Residential/limited access area

CARRIERS

- Carriers are selected based on the most economical rates. If you wish to choose another carrier, please contact Customer Service.
- Orders will be shipped palletized for LTL shipments only. Be sure to have proper equipment for receiving. This option is not currently available for our Cycle Ship Programs.
- Small items may be shipped via small package carrier. A damage disclaimer may need to be signed. Please check with Customer Service. Single assembled cabinets cannot be shipped via a small package carrier.

PICK UPS

- Pick up orders are available and must be picked up with 24 hours of the availability date.
- Orders not picked up within the 24 hour time frame are subject to storage and handling fees of \$20 per pallet per day.

MISSED DELIVERIES

- Refused orders or missed deliveries will be charged a minimum of \$500 re-delivery fee.

MISSING ITEM(S) FROM DELIVERY/SHIPMENT

- In the event that you have a missing item(s) from a delivery, please notify Customer Service of the missing item(s) using the Warranty & Replacement Form found on the Online Order site, listed in the top menu bar, under "Warranty."
- Missing item(s) must be reported within 15 days of delivery.



CABINET SPECS & FINISHES

RiverRun Cabinetry

GENERAL PRODUCT NOTES

DOOR STYLES, COLORS AND PRICE GROUPS:

| PRICE GROUP 1 | PRICE GROUP 2 | PRICE GROUP 3 | PRICE GROUP 4 | PRICE GROUP 5 |
|-----------------------------|----------------------------|----------------------|-------------------------------|------------------------------|
| Parkview Maple & MDF (slab) | Cambridge (slab) | Cambridge (5pc) | Dalton (slab) | Dalton (5pc) |
| | Jefferson MDF (slab) | Jefferson Oak (slab) | Jefferson Oak (5pc) | Hampton (5pc) |
| | Parkview Maple & MDF (5pc) | Jefferson MDF (5pc) | StoneRidge Maple & MDF (slab) | StoneRidge Maple & MDF (5pc) |

PRICE GROUPS FOR ACCESSORIES:

| PRICE GROUP 1 | PRICE GROUP 2 |
|---------------|---------------|
| Stains | Paints |

PRODUCT SPECIFICATIONS / NOTES

- RiverRun Cabinetry provides a broad selection of cabinet sizes and accessories.

DOOR CLEARANCE

- As with all full overlay door styles, clearance of doors and drawers must be taken into consideration during the design process to assure proper operation of all doors, drawers and roll out trays.

SINGLE DOOR CABINET HINGING

- Using the Online Order System, please select hinge left or hinge right on single door cabinets.

CABINET SIZES

- Standard wall cabinets are 12" deep unless otherwise specified.
- Standard base cabinets are 34½" tall and 24" deep.
- Standard vanity cabinets are 34½" tall and 21" deep.

TOE KICK MATERIAL

- All cabinets with a toe notch require ¼" x 4½" high, toe kick material. This needs to be ordered in addition to the cabinetry.

In keeping with a policy of continuous refinement, RiverRun Cabinetry reserves the right to alter specifications without general notice or obligation to make similar changes in previously produced product.

STANDARD PRODUCT MATERIALS

CASE

- Standard face frames are traditional construction and are ¾" thick with 1½" stiles and rails made of solid wood.
- End panels are ½" thick plywood. Interiors include a clear coat finish and exteriors have a natural finish, both with option to add a finished skin.
- Shelves are ¾" thick balanced veneer core plywood, sealed with a clear-coat and are adjustable and front edge banded.
- Backs are ½" thick plywood to allow multiple locations for installation. Base cabinet backs extend to the floor providing optimal structural stability.
- Toe kick is recessed 4" and is 4½" high.

DRAWERS, GLIDES & HINGES

- EuroBoxes come standard with ⅝" thick hardwood plywood with drill and dowel construction. Optional upgraded dovetail drawer boxes are also available. (*Current dovetail drawer box pricing is located in the Modification section.*) Both drawer box options are UV clear-coated on all sides.
- Bottoms are fully captured plywood on the EuroBox and the upgraded dovetail box.
- Glides are under mounted full-extension and soft close on both drawer options.
- Integrated soft-close hinges are standard for all door styles.

SLAB/5 PIECE COMBINATION DRAWER OPTIONS

- The combination drawer front selection (COMBO) will be a 5% upgrade on any applicable cabinet, the list is below are all cabinets that will be impacted by this upgrade. Any drawer front that is below the level of the drawer front of a standard base will be upgraded to the five piece. For example, on the 4 drawer base the top drawer will be slab and then every drawer below that will be five piece and on the 2 drawer base both drawer fronts will be five piece.

| <u>Product</u> | <u>Example</u> | <u>Description of Combo</u> |
|----------------------|----------------|--------------------------------------------------------------|
| Base Microwave | BM30 | Only drawer front (bottom of cab) five piece |
| 2 Drawer Base | DBXX-2 | Both drawer fronts five piece |
| 3 Drawer Base | DBXX-3 | Top drawer front slab, bottom two drawer fronts five piece |
| 4 Drawer Base | DBXX-4 | Top drawer front slab, bottom three drawer fronts five piece |
| Oven Cabinet | OC33XXD | Only drawer front (bottom of cab) five piece |
| Vanity 3 Drawer Base | VDBXX | Top drawer front slab, bottom two drawer fronts five piece |
| Vanity 4 Drawer Base | VDB60 (only) | Top drawer front slab, bottom three drawer fronts five piece |
| Vanity Sink Drawer | VSDLXX/VSDRXX | Top drawer front slab, bottom two drawer fronts five piece |

REVEALS

- Wall cabinet doors have a ¼" reveal on bottom and sides. The top reveal is 1" for moulding installation.
- Base cabinet doors have a ¼" reveal on bottom and sides. The top drawer head has a ¼" reveal on the sides and a ½" reveal on the bottom (between the drawer and door).
- All base cabinets have a 1" reveal on top.

FINISH

- Catalyzed conversion varnish top coat with UV protection is applied to doors, drawers and face frames.

SPECIES/MATERIAL

- Natural Hardwood
- MDF for painted doors, except where noted



DOOR STYLES & FINISHES

RiverRun Cabinetry

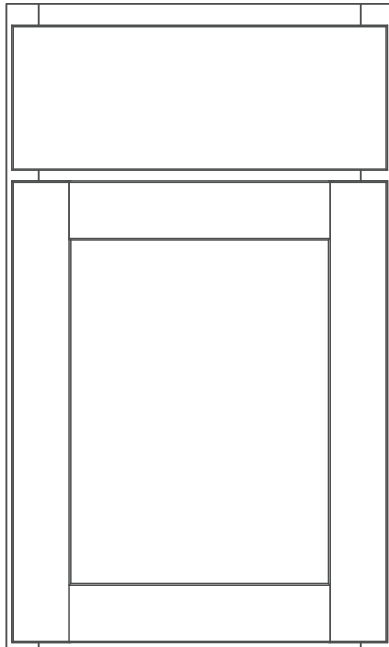
FINISH AVAILABILITY MATRIX

| | | PARKVIEW (Maple - stains) (MDF - paints) | STONERIDGE (Maple - stains) (MDF - paints) | JEFFERSON (Red Oak - stains & paints) (MDF - paints) | CAMBRIDGE (MDF) | DALTON (Birch) | HAMPTON (without glaze) (MDF) |
|--------|-----------|------------------------------------------------|--------------------------------------------------|------------------------------------------------------------|--------------------|-------------------|-------------------------------------|
| STAINS | Smoke | X | X | X | | X | |
| | Cocoa | X | X | X | | X | |
| | RiverRock | X | X | X | | X | |
| | Pecan | X | X | X | | X | |
| | Sahara | X | X | X | | X | |
| | Natural | | | | | X | |

| PAINTS | White | X | X | X | X | | X |
|--------|-------------|---|---|---|---|--|---|
| | Linen | X | X | X | X | | X |
| | Mint | X | X | X | X | | X |
| | Pewter | X | X | X | X | | X |
| | Sage | X | X | X | X | | X |
| | Blue Lagoon | X | X | X | X | | X |
| | Onyx | X | X | X | X | | X |
| | Peppercorn | X | X | X | X | | X |



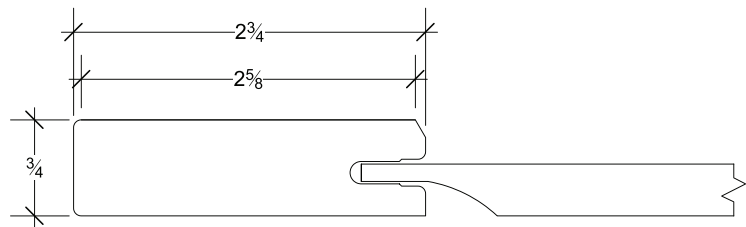
CAMBRIDGE (SLAB)



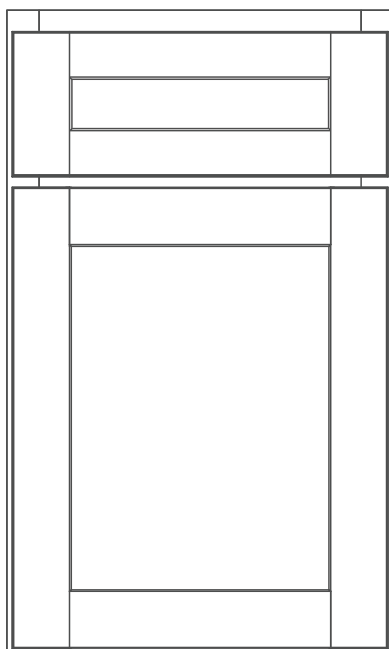
Species: Premium MDF

Construction & Specifications:

- drawer fronts are slab
- available in all paint colors
- full overlay door
- 2 3/4" stiles and rails
- center panel is a solid reversed raised panel



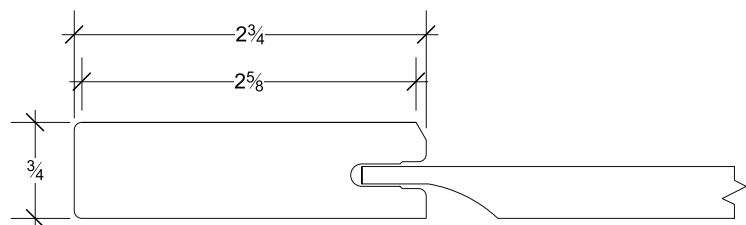
CAMBRIDGE (5-PIECE)



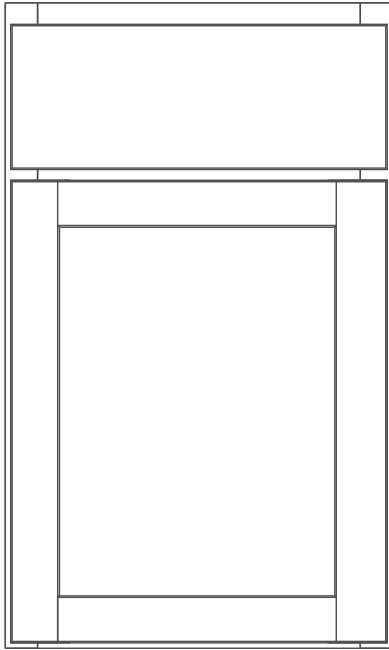
Species: Premium MDF

Construction & Specifications:

- drawer fronts are 5-piece
- available in all paint colors
- full overlay door
- 2 3/4" stiles and rails
- center panel is a solid reversed raised panel



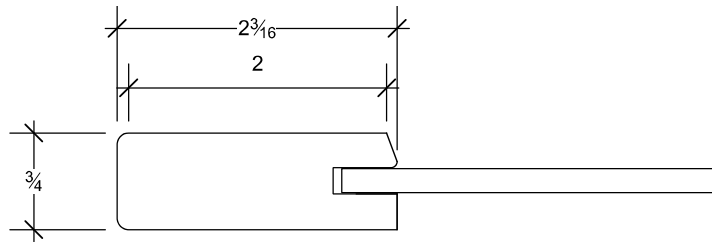
PARKVIEW (SLAB)



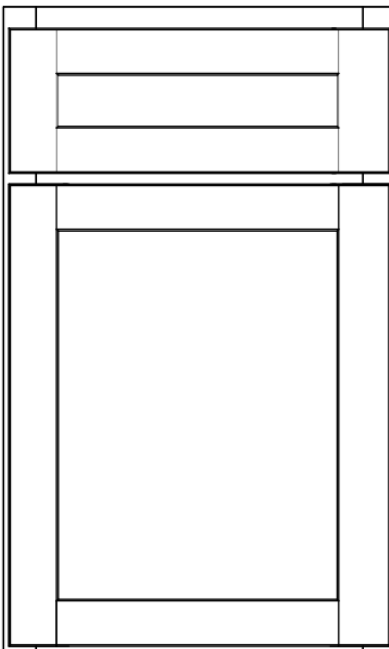
Species: Maple & Premium MDF

Construction & Specifications:

- drawer fronts are slab
- available in all paint colors
- available in Cocoa, RiverRock, Smoke, Pecan & Sahara
- full overlay door
- 2 $\frac{3}{16}$ " stiles and rails



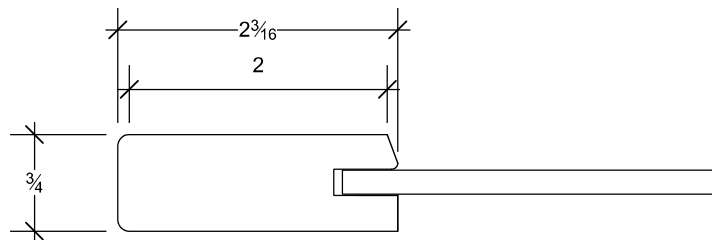
PARKVIEW (5-PIECE)



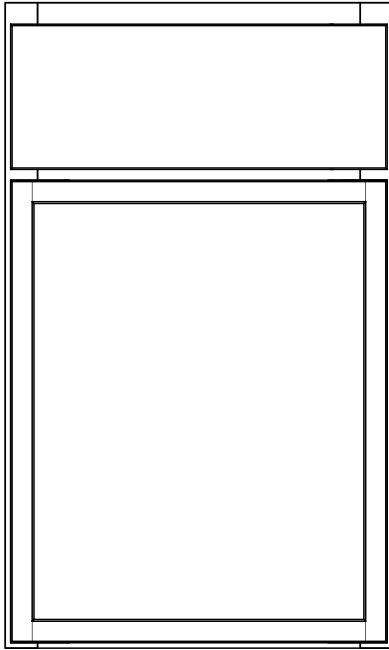
Species: Maple & Premium MDF

Construction & Specifications:

- drawer fronts are 5-piece
- available in all paint colors
- available in Cocoa, RiverRock, Smoke, Pecan & Sahara
- full overlay door
- 2 $\frac{3}{16}$ " stiles and rails



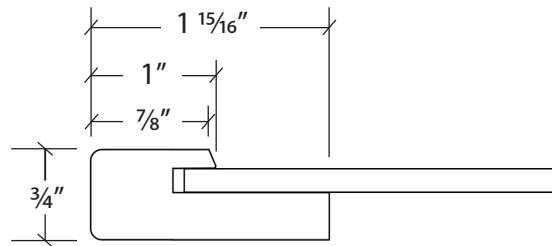
STONERIDGE (SLAB)



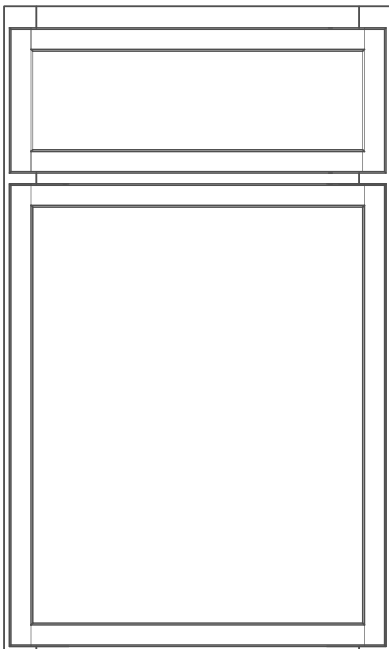
Species: Maple & Premium MDF

Construction & Specifications:

- drawer fronts are slab
- available in all paint colors
- available in Cocoa, RiverRock, Smoke, Pecan & Sahara
- full overlay door
- 1" stiles and rails



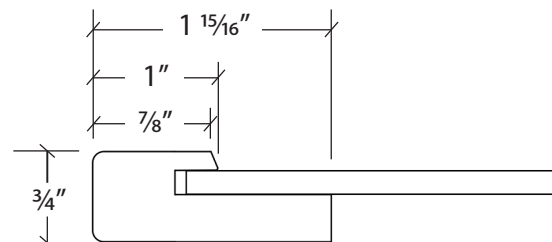
STONERIDGE (5-PIECE)



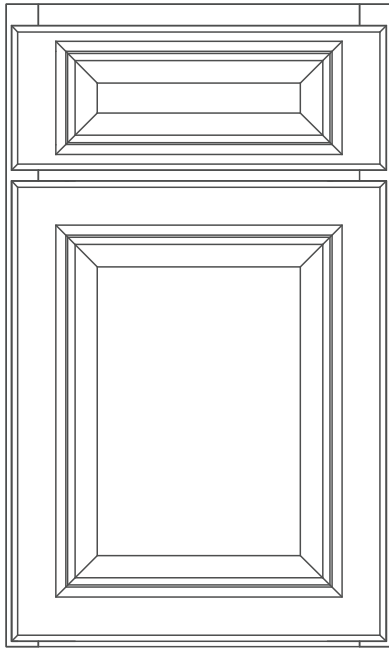
Species: Maple & Premium MDF

Construction & Specifications:

- drawer fronts are 5-piece
- available in all paint colors
- available in Cocoa, RiverRock, Smoke, Pecan & Sahara
- full overlay door
- 1" stiles and rails



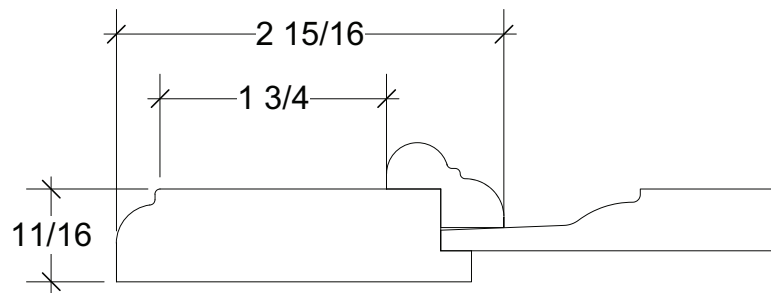
HAMPTON



Species: Premium MDF

Construction & Specifications:

- drawer fronts are 5-piece
- available in all paint colors
- full overlay door
- 2^{15/16}" stiles and rails
- raised center panel





| DOOR SIZE CHART | | | |
|-----------------|-----------------------------------------------|------------|-------------|
| ITEM NO. | CABINET | DOOR WIDTH | DOOR HEIGHT |
| DR-ER33 | ER33 | 7.8750 | 28.7500 |
| DR-W0930 | W930, B9 | 8.5000 | 28.7500 |
| DR-W0936 | W936 | 8.5000 | 34.7500 |
| DR-W0942 | W942 | 8.5000 | 40.7500 |
| DR-ERCW2415 | ERCW2415 | 10.805 | 13.7500 |
| DR-ER36 | ER36, ERCW2430 | 10.805 | 28.7500 |
| DR-ERCW2436 | ERCW2436 | 10.805 | 34.7500 |
| DR-ERCW2442 | ERCW2442 | 10.805 | 40.7500 |
| DR-W1215 | W1215 | 11.5000 | 13.7500 |
| DR-B12 | B12, VB12 | 11.5000 | 21.5000 |
| DR-W1230 | W1230, BB36, BW2430, WEP1230 | 11.5000 | 28.7500 |
| DR-W1236 | W1236, BW2436, WEP1236 | 11.5000 | 34.7500 |
| DR-W1242 | W1242, BW2442, WEP1242 | 11.5000 | 40.7500 |
| DR-2415-2 | W2415 | 11.6875 | 13.7500 |
| DR-AG2418 | AG2418-BD | 11.6875 | 16.7500 |
| DR-B24-2 | B24-2, V24-2 | 11.6875 | 21.5000 |
| DR-W2430-2 | W2430-2, P2484 | 11.6875 | 28.7500 |
| DR-W2436-2 | W2436-2, P2490 | 11.6875 | 34.7500 |
| DR-W2442-2 | W2442-2, P2496 | 11.6875 | 40.7500 |
| DR-P2484 | P2484, P2490, P2496 (pantry bottom door) | 11.6875 | 49.0000 |
| DR-2715 | W2715 | 13.1875 | 13.7500 |
| DR-B27 | B27, V27 | 13.1875 | 21.5000 |
| DR-W2730 | W2730 | 13.1875 | 28.7500 |
| DR-W2736 | W2736 | 13.1875 | 34.7500 |
| DR-W2742 | W2742 | 13.1875 | 40.7500 |
| DR-TAB12FHDL | TAB12FHDL, TAB12FHDR | 14.0000 | 28.7500 |
| DR-W1515 | W1515, CW2415 | 14.5000 | 13.7500 |
| DR-ADAG2418 | ADAG2418 | 14.5000 | 17.5000 |
| DR-B15 | B15, BB42, DSB36, VB15, VSB60, VSDL30, VSDR30 | 14.5000 | 21.5000 |
| DR-W1530 | W1530, CW2430 | 14.5000 | 28.7500 |
| DR-W1536 | W1536, CW2436, CW2736 | 14.5000 | 34.7500 |
| DR-W1542 | W1542, CW2442, CW2742 | 14.5000 | 40.7500 |
| DR-W3012 | W3012 | 14.6875 | 10.7500 |
| DR-WMW3033 | WMW303318 | 14.6875 | 12.2500 |
| DR-W3015 | W3015 | 14.6875 | 13.7500 |
| DR-W3018 | W3018, SBFH30 | 14.6875 | 16.7500 |
| DR-W3021 | W3021 | 14.6875 | 19.7500 |

(continued on next page)

(continued from previous page)

| DOOR SIZE CHART | | | |
|-----------------|---------------------------|---------|--------|
| ITEM NO. | CABINET | WIDTH | HEIGHT |
| DR-B30 | B30, SB30, V30, VSB60 | 14.6875 | 21.5 |
| DR-W3024 | W3024 | 14.6875 | 22.75 |
| DR-WMW3045 | WMW304518 | 14.6875 | 24.25 |
| DR-W3027 | W3027 | 14.6875 | 25.75 |
| DR-W3030 | W3030, BW4230 | 14.6875 | 28.75 |
| DR-W3036 | W3036 | 14.6875 | 34.75 |
| DR-W3042 | W3042 | 14.6875 | 40.75 |
| DR-W3315 | W3315 | 16.1875 | 13.75 |
| DR-OC3384D | OC3384D, SBFH33, W3318 | 16.1875 | 16.75 |
| DR-B33 | B33, SB33, V33 | 16.1875 | 21.5 |
| DR-OC3390D | OC3390D | 16.1875 | 22.75 |
| DR-W3330 | W3330, OC3396D | 16.1875 | 28.75 |
| DR-W3336 | W3336 | 16.1875 | 34.75 |
| DR-W3342 | W3342 | 16.1875 | 40.75 |
| DR-W1815 | W1815 | 17.5 | 13.75 |
| DR-B18 | B18, VB18, VSDL36, VSDR36 | 17.5 | 21.5 |
| DR-W1830 | W1830, BW3030, P1884 | 17.5 | 28.75 |
| DR-W1836 | W1836, BW3036, P1890 | 17.5 | 34.75 |
| DR-W1842 | W1842, BW3042, P1896 | 17.5 | 40.75 |
| DR-P1884 | P1884, P1890, P1896 | 17.5 | 49.0 |
| DR-W3612 | W3612, W361224 | 17.6875 | 10.75 |
| DR-W3615 | W3615 | 17.6875 | 13.75 |
| DR-W3618 | W3618, W361824, SBFH36 | 17.6875 | 16.75 |
| DR-W362124 | W362124 | 17.6875 | 19.75 |
| DR-B36 | B36, SB36, V36, VSB36 | 17.6875 | 21.5 |
| DR-W3624 | W3624, W362424 | 17.6875 | 22.75 |
| DR-W3630 | W3630 | 17.6875 | 28.75 |
| DR-W3636 | W3636 | 17.6875 | 34.75 |
| DR-W3642 | W3642 | 17.6875 | 40.75 |
| DR-W3912 | W3912 | 19.1875 | 10.75 |
| DR-W3915 | W3915 | 19.1875 | 13.75 |
| DR-B39 | B39 | 19.1875 | 21.5 |
| DR-W3930 | W3930 | 19.1875 | 28.75 |
| DR-W3936 | W3936 | 19.1875 | 34.75 |
| DRW2115 | W2115, W4215 | 20.5 | 13.75 |
| DR-B21 | B21, BB48 | 20.5 | 21.5 |
| DR-W2130 | W2130 | 20.5 | 28.75 |
| DR-W2136 | W2136 | 20.5 | 34.75 |
| DR-W2142 | W2142 | 20.5 | 40.75 |

(continued on next page)

(continued from previous page)

| DOOR SIZE CHART | | | |
|-----------------|-----------------------|---------|--------|
| ITEM NO. | CABINET | WIDTH | HEIGHT |
| DR-B42 | B42, SB42, V42, VSB42 | 20.6875 | 21.5 |
| DR-W4230 | W4230 | 20.688 | 28.75 |
| DR-W4236 | W4236 | 20.688 | 34.75 |
| DR-DSB42 | DSB42, CSF42 | 23.0 | 21.5 |
| DR-VSB48 | VSB48, VDB60 | 23.5 | 21.5 |
| DR-BW3630 | BW3630, WEP2430-1 | 23.5 | 28.75 |
| DR-BW3636 | BW3636 | 23.5 | 34.75 |
| DR-BW3639 | BW3639 | 23.5 | 37.75 |
| DR-BW3642 | BW3642 | 23.5 | 40.75 |



| DRAWER FRONT SIZE CHART | | | |
|-------------------------|-------------------------------------------------------------------------------------------------|---------|--------|
| ITEM NO. | CABINET | WIDTH | HEIGHT |
| DF-KD30 | KD30 | 23.5 | 4.25 |
| DF-KD36 | KD36 | 29.5 | 4.25 |
| DF-VSB36 | VSB36-left/right | 10 | 6.75 |
| DF-B12 | B12, DB12-upper, VB12, VDB12-upper, VDB60-center, VSB42-left/right, VSB48-left/right | 11.5 | 6.75 |
| DF-B15 | B15, BB42, DB15-upper, DSB36, VB15, VDB15-upper, VSDL30-upper, VSDR30-upper, VSB60-upper | 14.5 | 6.75 |
| DF-B30 | B30, SB30, V30 | 14.6875 | 6.75 |
| DF-VSB36-center | VSB36-center | 15.125 | 6.75 |
| DF-B33 | B33, SB33, V33 | 16.1875 | 6.75 |
| DF-B18 | B18, DB18-upper, DDB18-upper, VB18-upper, VDB18-upper, VSB42-center, VSDL36-upper, VSDR36-upper | 17.5 | 6.75 |
| DF-B36 | B36, SB36, V36 | 17.6875 | 6.75 |
| DF-B39 | B39 | 19.1875 | 6.75 |
| DF-B21 | B21, BB48, DB21-upper, VDB21-upper | 20.5 | 6.75 |
| DF-B42 | B42, SB42, V42 | 20.6875 | 6.75 |
| DF-DSB42 | DSB42, CSF42 | 23 | 6.75 |
| DF-B24 | B24-2, DB24-upper, V24-2, VDB24-upper, VDB60-left/right, VSB48-center | 23.5 | 6.75 |
| DF-B27 | B27, V27 | 26.5 | 6.75 |
| DF-B30-1 | DB30-upper, VSB60-center | 29.5 | 6.75 |
| DF-OC3384 | OC3384D, OC3390D, OC3396D | 32.5 | 6.75 |
| DF-B36-1 | DB36-upper | 35.5 | 6.75 |
| DF-VDB60 | VDB60-bottom | 11.5 | 7 |
| DF-DB12 | DB12-bottom, VDB12-bottom | 11.5 | 10.5 |
| DF-DB15 | DB15-bottom, VDB15-bottom, VSDR30-bottom, VSDL30-bottom | 14.5 | 10.5 |
| DF-DB18 | DB18-bottom, VDB18-bottom, VSDR36-bottom, VSDL36- bottom | 17.5 | 10.5 |
| DF-DB21 | DB21-bottom, VDB21-bottom | 20.5 | 10.5 |
| DF-DB24 | DB24-bottom, VDB24-bottom | 23.5 | 10.5 |
| DF-DB27 | DB27-3 middle & bottom | 26.5 | 10.5 |
| DF-DB30 | DB30-bottom | 29.5 | 10.5 |
| DF-DB33 | DB33-3 middle & bottom | 32.5 | 10.5 |
| DF-DB36 | DB36-bottom | 35.5 | 10.5 |
| DF-BMD24 | BMD24 | 23.5 | 11 |
| DF-BMD27 | BMD27 | 26.5 | 11 |
| DF-BM30 | BM30 | 29.5 | 11 |
| DF-DDB18 | DDB18-bottom | 17.5 | 16.5 |

Doors and drawer fronts are available for purchase. (list prices)

Doors - \$110 per sq. ft

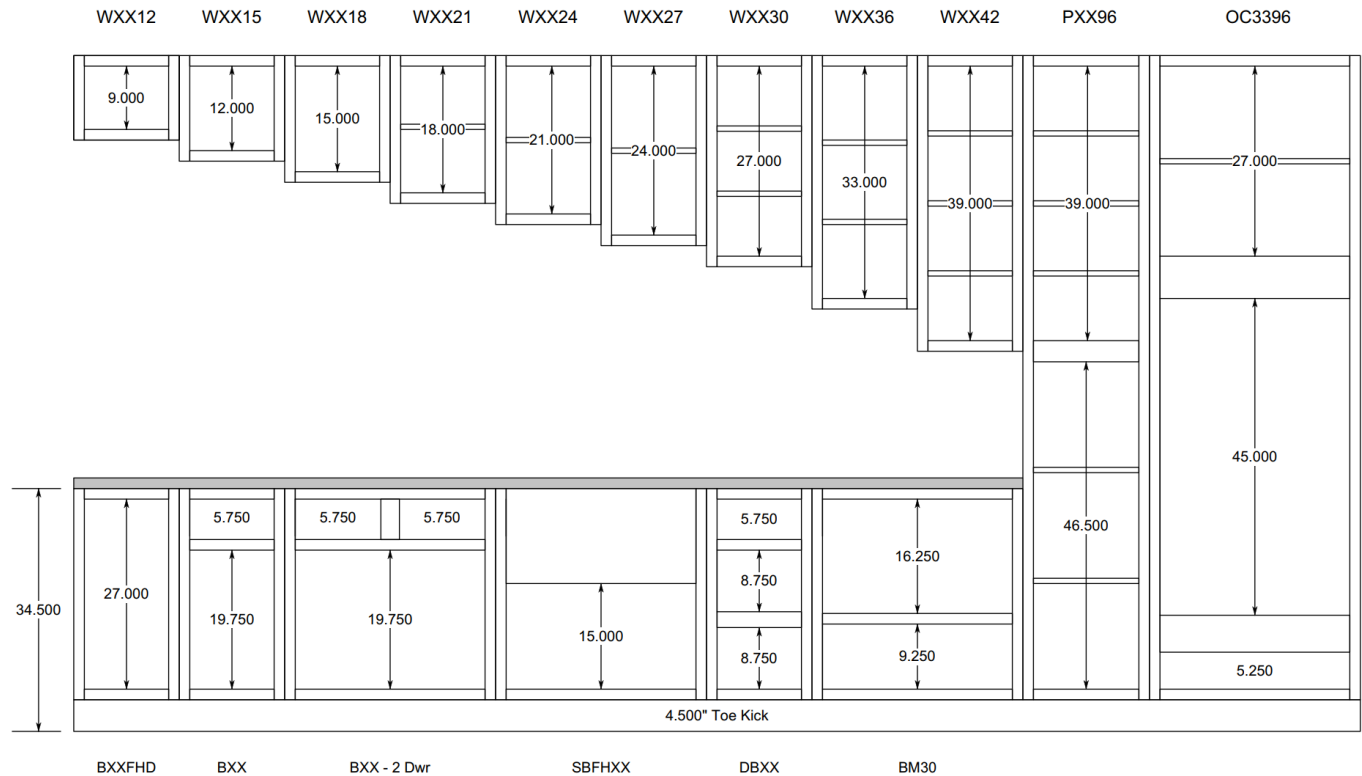
Drawer Fronts - \$130 per sq. ft



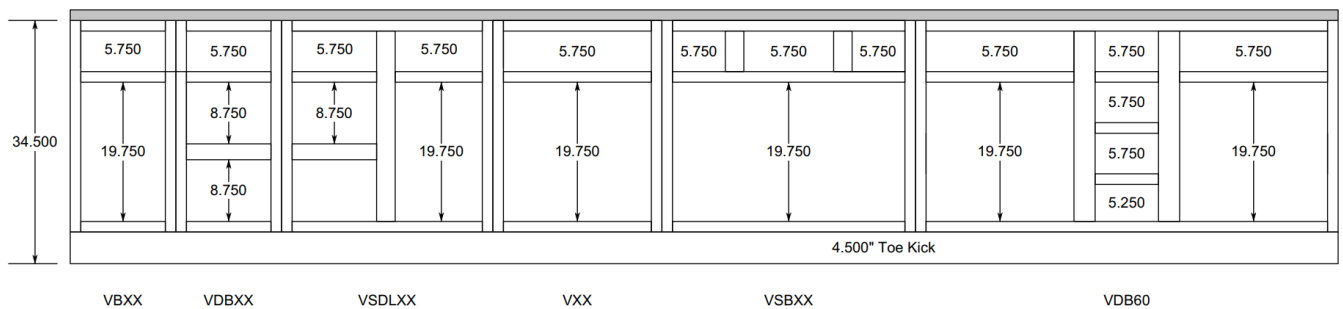
CABINET OPENING DIMENSIONS

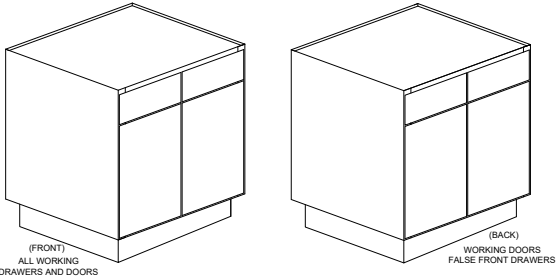
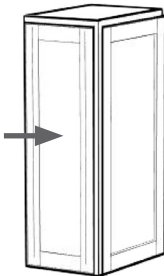
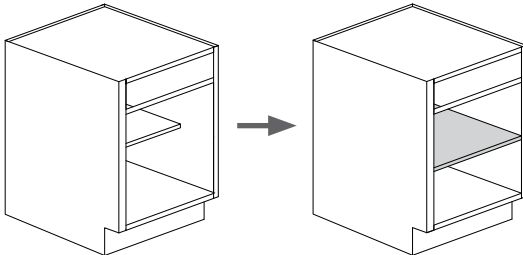
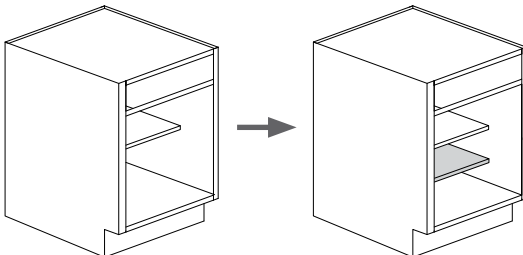
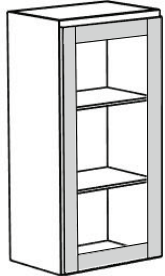
RiverRun Cabinetry

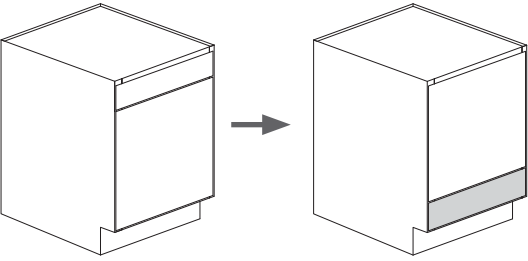
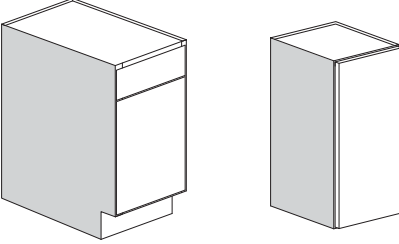
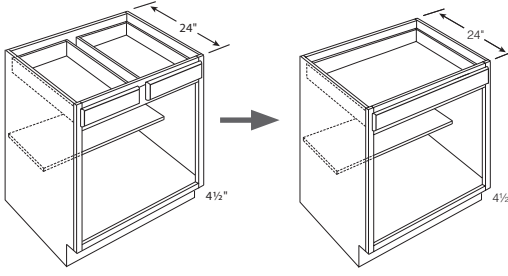
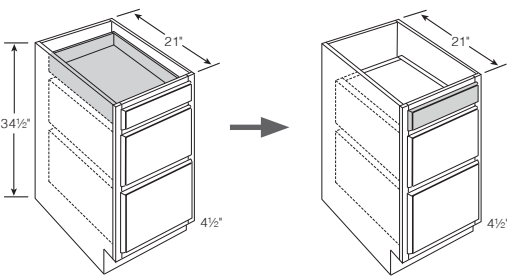
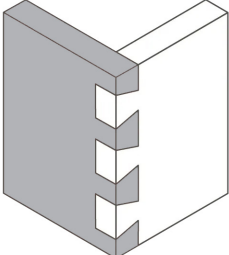
Kitchen Frame Openings



Vanity Frame Openings



| MOD. CODES & DESCRIPTIONS | EXAMPLE | LIST PRICES |
|------------------------------------------------------------------------------------------------------------------------------------------------------------------------------------------------------------------|---------------------------------------------------------------------------------------------------------------------------------------|------------------------------------------------------|
| <p>PN Peninsula Cabinet</p> |  <p>pictured: B27 peninsula cabinet</p> | <p>1.5 x cab. *</p> |
| <p>WEP Factory Installed Wall End Panels <i>For loose WEPs - see Wall Section</i></p> <p>BEP Factory Installed Base End Panels <i>For loose BEP - see Base Section</i></p> |  <p>pictured: W1230 Wall End Panel (WEP)</p> | <p>cab + WEP + \$90</p> <p>cab + BEP + \$90</p> |
| <p>FDS Install Full Depth Shelf in a base cabinet <i>Does not extend lead time.</i></p> |  <p>pictured: B24-2 installed full depth shelf</p> | <p>cab + 100</p> |
| <p>2SH Install Second Shelf in a base cabinet <i>Does not extend lead time.</i></p> |  <p>pictured: B24-2 installed second shelf</p> | <p>cab + 100</p> |
| <p>PG Prep for Glass - remove center panel in one door or PG2 (2 doors)</p> |  <p>pictured: W1230 Prep for Glass</p> | <p>cab + 163 (1 door)</p> <p>cab + 327 (2 doors)</p> |

| MOD. CODES & DESCRIPTIONS | EXAMPLE | LIST PRICES |
|---------------------------------------------------------------------------------------------------------------------------------------------------------------------------------------------------------------------------------|------------------------------------------------------------------------------------------------------------------------------------------------------|--------------------------------------------------------------------|
| <p>BD</p> <p>Reversed Base Cabinet with drawer at the bottom of the cabinet</p> <p>For a functioning bottom drawer, select a base or vanity base, <u>not</u> a sink base or vanity sink base.</p> |  <p>pictured: B21 reversed base cabinet (drawer at the bottom)</p> | <p>cab + 417</p> |
| <p>Finished Ends</p> <p>(cost per side)</p> |  <p>pictured: B15 finished left and W1230 finished left</p> | <p>cab + 56 (wall) cab + 95 (base) cab + 225 (tall 96)</p> |
| <p>1DRW</p> <p>Convert 2 drawers to 1 drawer (only available on 30", 33", & 36" base cabinets)</p> |  <p>pictured: B33- 2 drawers converted to 1 drawer</p> | <p>cab + 333</p> |
| <p>SB</p> <p>Sink Base Converts Top Drawer to False Front in Drawer Base or Vanity Drawer Base</p> |  <p>pictured: VDB- top drawer converted to false front</p> | <p>cab + 0 (no additional charge)</p> |
| <p>DOVETAIL DRAWER BOX (illustration of corner)</p> <p>This is an Upgrade Option.</p> |  | <p>33 per box</p> |

| SUMMARY MODIFICATIONS & SUGGESTED LIST PRICES | | |
|-----------------------------------------------|-----------------------------------------------------------------------------------------------------------------|---------------------------------------------------|
| MOD. CODES | DESCRIPTIONS | LIST PRICES |
| RD | Reduce Depth of cabinet base (12" minimum); wall (4" minimum) - 1" increments Reduce Depth of roll out tray | cab + 300 cab + 500 (talls & bases) ROT+167 |
| ID | Increase Depth of wall and vanity cabinet (24" maximum); bookcase (18" maximum) - 1" increments | cab + 657 (wall & vanity) 1.5 x cab (bookcase) |
| BTKR or L or B | Recess Toe Kick on Right <u>or</u> Left <u>or</u> Back of base, pantry, or vanity cabinet | cab + 283 |
| BTKRL | Recess Toe Kick on Right <u>and</u> Left of base, pantry, or vanity cabinet | cab + 417 |
| BTKN | Toe Kick Removed from base, pantry, or vanity cabinet (height less 4½") | cab + 450 |
| WTKF | Add Toe Kick to Wall Cabinet with Toe Kick Space at Front only (height plus 4½") | cab + 417 |
| WTKR or L | Add Toe Kick to Wall Cabinet with Toe Kick Space to Right <u>or</u> Left (height plus 4½") | cab + 417 |
| WTKRL | Add Toe Kick to Wall Cabinet with Toe Kick Space to Right <u>and</u> Left (height plus 4½") | cab + 483 |
| WTKFR or L | Add Toe Kick to Wall Cabinet with Toe Kick Space to Front <u>and</u> Right <u>or</u> Left (height plus 4½") | cab + 483 |
| WTKFRL | Add Toe Kick to Wall Cabinet with Toe Kick Space to Front, Right, <u>and</u> Left (height plus 4½") | cab + 550 |
| TP # | Face Frame Only - face frame, drawer front(s), and door(s) only | 75% x cab. * |
| BO # | Box Only | 60% x cab. * |
| NOFRONTS# | No Doors/Drawer Fronts - includes hardware, shelves and drawer | 85% x cab. * |
| FI | Cabinet with Finished Interior | cab + 420 |
| FIT | Tall Cabinet with Finished Interior | 533 |
| PCR or L | Pipe Chase Cut-Out on Right <u>or</u> Left Corner (width x depth) | cab + 983 |
| PCM | Pipe Chase Cut-Out in Middle (width x depth, location) | cab +1,250 |
| ESR or L | Install Extended Stile on Right <u>or</u> Left side of cabinet (Adds 1.5" or 3" to either side) Field Trimmable | 1.5" ext. = cab + 417 3" ext. = cab + 483 |
| ESRL | Install Extended Stile on Right <u>and</u> Left sides of cabinet (Adds 3" to both sides) Field Trimmable | 1.5" ext. = cab + 834 3" ext. = cab + 966 |
| PN | Peninsula Cabinet | 1.5 x cab. * |
| WEP or BEP | Factory Applied Wall or Base Panels | cab + WEP/BEP + 90 |
| FDS # | Install Full Depth Shelf in a base cabinet | cab + 100 |
| 2SH # | Install Second Shelf in a base cabinet | cab + 100 |
| PG | Prep for Glass - remove center panel in door | cab + 163 |
| BD | Reversed Base Cabinet with drawer at the bottom of the cabinet | cab + 417 |

NOTE: Modifications extend lead times, except modifications noted with "#".

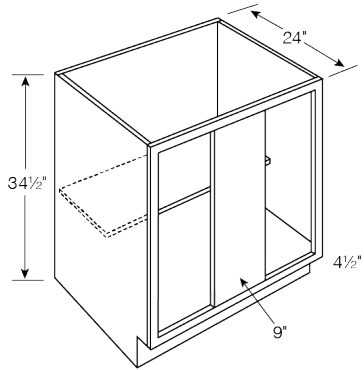
(continued on next page)

| SUMMARY MODIFICATIONS & SUGGESTED LIST PRICES <i>(continued)</i> | | |
|------------------------------------------------------------------|--------------------------------------------------------------------------|-----------------------------------------------------------|
| MOD. CODES | DESCRIPTIONS | LIST PRICES |
| FINISHED END # | Finished Ends (cost per side) | cab + 56 (wall) cab + 95 (base) cab + 225 (tall 96) |
| 1DRW # | Converts 2 drawers to 1 drawer, Only available for 30", 33", 36" | cab + 333 |
| SB # | Converts top drawer to false front (DBs or VDBs) | No Charge |
| DOVETAIL DRAWER BOX # | Upgrade from the standard EuroBox (No Charge) to the Dovetail Drawer Box | \$33 per Box |

NOTE: Modifications extend lead times, except modifications noted with "#".

BLIND BASE CABINETS

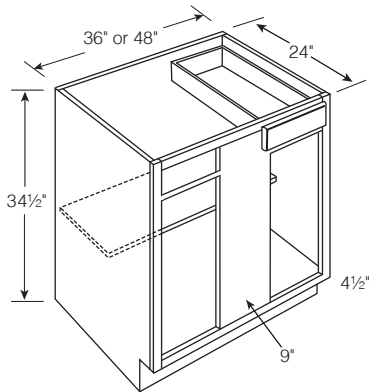
Blind Base Cabinet, 1 Door & No Drawer



| | 1 | 2 | 3 | 4 | 5 |
|---------------------|-------|-------|-------|-------|-------|
| BB36 (No Drawer) | 631 | 660 | 689 | 718 | 746 |
| BB42FHD (No Drawer) | 895 | 936 | 977 | 1,018 | 1,058 |
| BB48FHD (No Drawer) | 1,043 | 1,090 | 1,138 | 1,185 | 1,232 |

- Specify on Order Which Side Receives Door
- Shown: Blind Left with Door on Right

Blind Base Cabinet, 1 Door & 1 Drawer

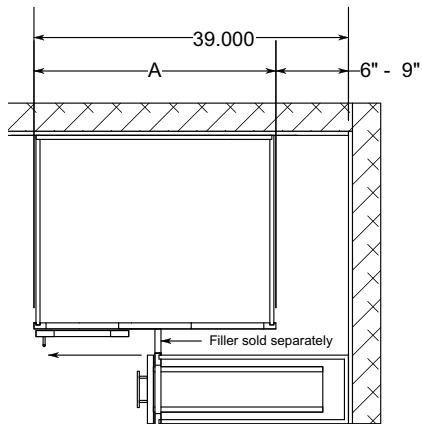


| | 1 | 2 | 3 | 4 | 5 |
|------|-------|-------|-------|-------|-------|
| BB42 | 895 | 936 | 977 | 1,018 | 1,058 |
| BB48 | 1,043 | 1,090 | 1,138 | 1,185 | 1,232 |

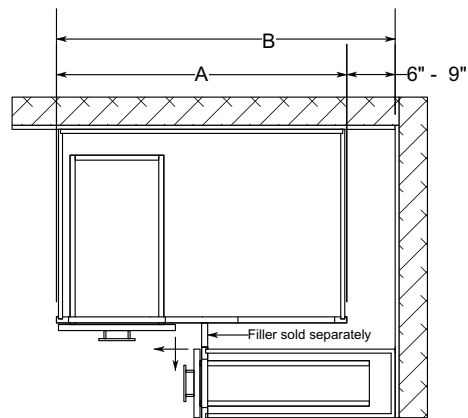
- Specify on Order Which Side Receives Drawer and Door
- Shown: Blind Left with Door and Drawer on Right

Blind Base Cabinet Installation Recommendations

By Width



BB36 Right installation shown



BB42 & BB48 Right installation shown

| Cabinet SKU | Actual Cabinet Width (A) | Recommended Install Spacing from Wall (B) | Door opening width (C) |
|-------------|--------------------------|-------------------------------------------|------------------------|
| BB36 | 30" | 39" - 42" | 9" |
| BB42 | 36" | 42" - 45" | 12" |
| BB48 | 48" | 48" - 52" | 18" |

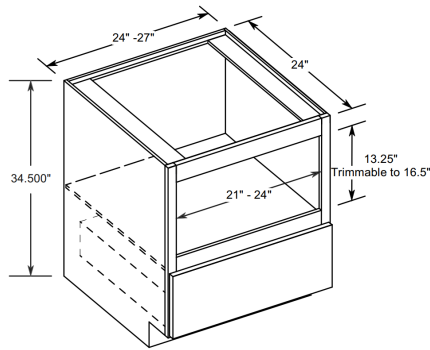
ORDER FILLER SEPARATELY

**FULL-HEIGHT DOOR, NO DRAWER (BB36 ONLY)

9" CENTER STILE

SPECIALTY BASE CABINETS

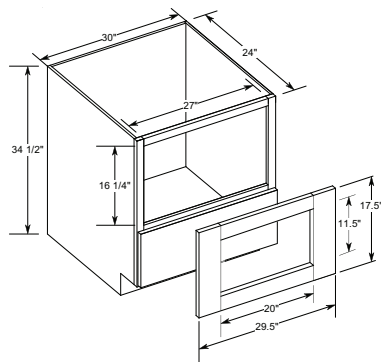
Base Microwave Drawer Cabinets, 24" & 27" Wide



| | 1 | 2 | 3 | 4 | 5 |
|--------------|-------|-------|-------|-------|-------|
| BMD24 | 1,127 | 1,179 | 1,230 | 1,281 | 1,332 |
| BMD27 | 1,177 | 1,231 | 1,284 | 1,338 | 1,391 |

- Drawer Head Height: 11"
- Drawer Box Height: 6" (Inside Depth 5¼")
- Finished Interior Not Included

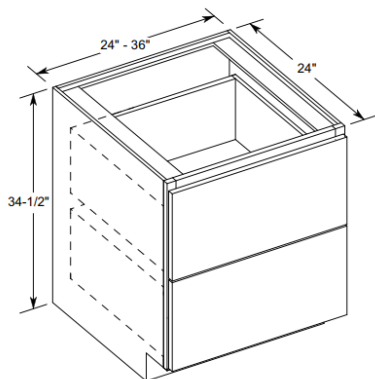
Base Microwave Cabinet w/ Overlay, 30" Wide



| | 1 | 2 | 3 | 4 | 5 |
|-------------|-----|-----|-----|-----|-------|
| BM30 | 862 | 902 | 941 | 980 | 1,019 |

- 27" Wide Opening
- Drawer Head Height: 11"
- Drawer Box Inside Depth 5¼"
- Trimmable Overlay Panel Included
- Finished Interior Not Included

Drawer Base Cabinet, 2 Drawers

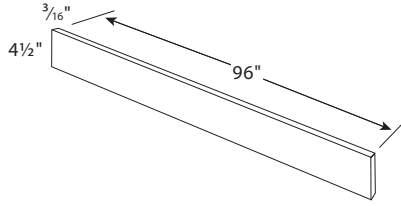


| | 1 | 2 | 3 | 4 | 5 |
|---------------|-------|-------|-------|-------|-------|
| DB24-2 | 1,434 | 1,500 | 1,565 | 1,630 | 1,695 |
| DB30-2 | 1,481 | 1,548 | 1,615 | 1,683 | 1,750 |
| DB36-2 | 1,669 | 1,745 | 1,820 | 1,896 | 1,972 |

- Top Drawer Front Height: 14"
- Bottom Drawer Front Height: 14¼"
- Both Drawers will come standard with 6" tall Drawer Box and Heavy Duty Glides.
- Optional Upgrade to 10½" Tall Drawer Box for \$435 (list price)
- Not available in Hampton
- Depth of this cabinet cannot be modified

ACCESSORIES

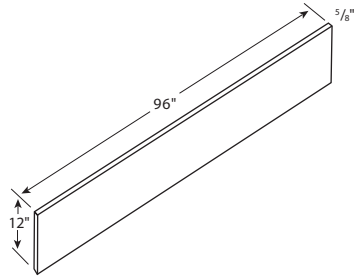
Toe Kick Cover



| | Stains | Paints |
|------|--------|--------|
| TKS8 | 74 | 78 |

- 3/16" x 4 1/2" x 96" (Stain)
- 1/4" x 4 1/2" x 96" (Paint)
- 8' Long

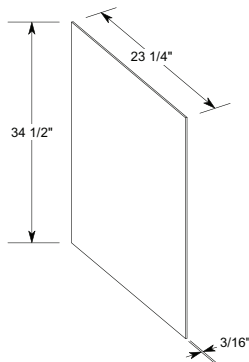
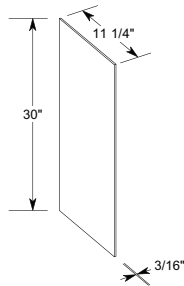
Shelf Material



| | Stains | Paints |
|------------|--------|--------|
| SHELF12X96 | 217 | 228 |

- 12" x 96" x 5/8"
- Natural Birch Veneer or Finished to Match Door Color
- One Long Edge Banded

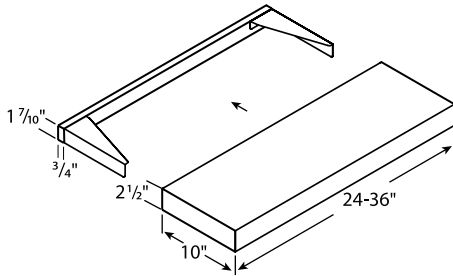
Skins (for Walls, Bases & Talls)



| | Stains | Paints |
|----------------------|--------|--------|
| SKINWALL2424 | 53 | 56 |
| SKINWALL30 | 53 | 56 |
| SKINWALL36 | 53 | 56 |
| SKINWALL39 | 53 | 56 |
| SKINWALL42 | 53 | 56 |
| SKINBASE (UNIVERSAL) | 84 | 88 |
| SKINBASELEFT | 90 | 95 |
| SKINBASERIGHT | 90 | 95 |
| SKINTALL96 | 208 | 218 |
| SKINTALL96LEFT | 214 | 225 |
| SKINTALL96RIGHT | 214 | 225 |

ACCESSORIES

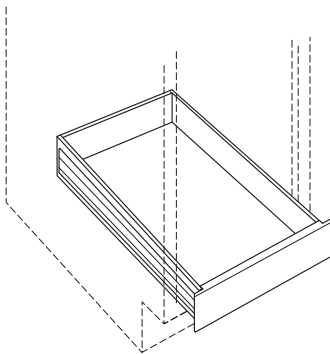
Floating Shelf



| | Stains | Paints |
|-------------|--------|--------|
| SHEFFLOAT24 | 438 | 460 |
| SHEFFLOAT30 | 459 | 482 |
| SHEFFLOAT36 | 502 | 527 |
| SHEFFLOAT42 | 547 | 574 |
| SHEFFLOAT48 | 596 | 626 |
| SHEFFLOAT54 | 650 | 683 |
| SHEFFLOAT60 | 709 | 744 |

- Comes with Installation Bracket
- Cannot be Modified

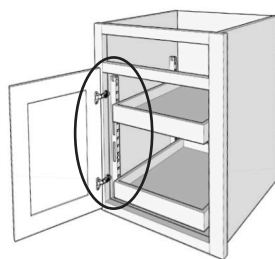
Roll Out Tray



| | |
|--------|-----|
| B15ROT | 279 |
| B18ROT | 287 |
| B21ROT | 294 |
| B24ROT | 303 |
| B27ROT | 308 |
| B30ROT | 318 |
| B33ROT | 326 |
| B36ROT | 333 |

- 4" Tall, Dovetail Drawers
- Full Extensions, Soft Close Undermount Glides
- Will Fit into Tall Units
- To be used with Pilaster Kits, sold separately
- Not Installed; Tray Ships Separately From Cabinet

Pilaster Kit for Roll Out Tray



Pilaster Kit Installed
(Roll Out Trays not included)



Pilaster



Hook
Dowel

| | Stains | Paints |
|-------------------|--------|--------|
| PILASTERKIT | 95 | 95 |
| PILASTERSETINSTLD | 113 | 113 |

- Pilaster Kit comes with 4 Pilasters and 8 Hook Dowels
- Roll Out Tray is Sold and Ships Separately
- Order 1 Kit for a Base Cabinet and 2 Kits for Pantries