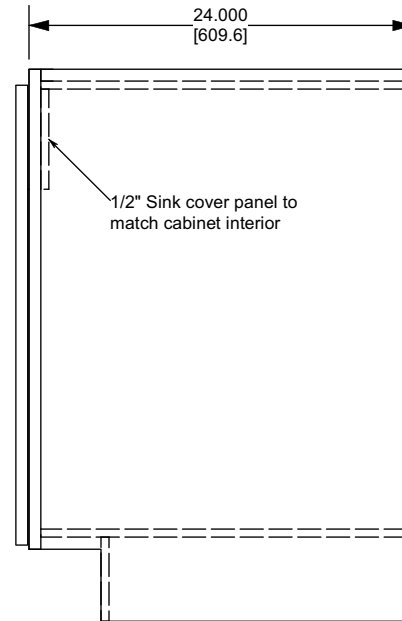
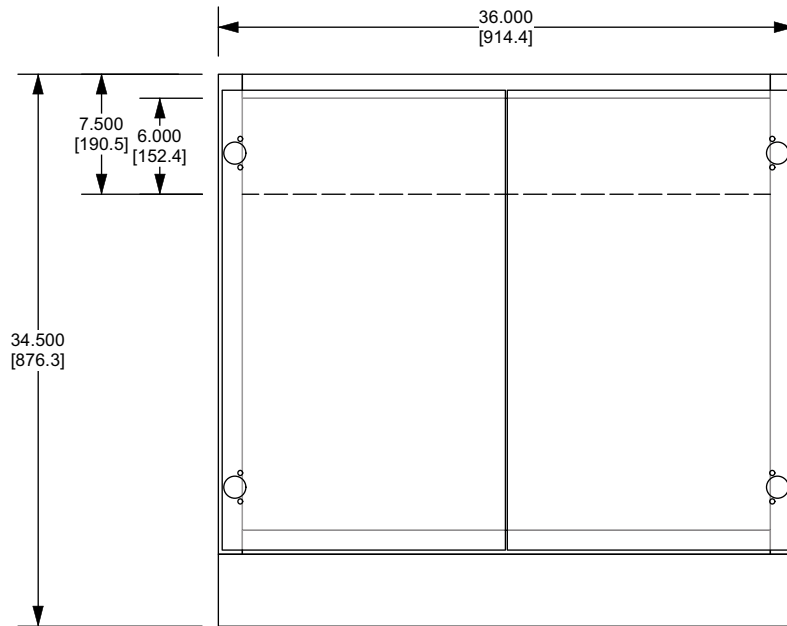


Notes:

- The design shown does not match the Custom Cab request of a flush sink panel, due to the need to position the hinges high on the door. This is needed to minimize torque on the hinges and prevent premature hinge failure.



Standard Components:

- Frame: FF-W3630SMUNF
- Doors: DR-W3630VESMUNF
- End panels: EP-B, EP-L
- Back: BK-B36

Customer: Mittman
 Door Style: Parkview
 Color: Smoke

Approved: _____

Date: _____

Custom Components:

- Sink cover panel: .5" X 7.5" X 34.5"

Rev	Description	Who	Date

Drawn By: NH	TITLE Sink base - Full Height with Sink cover panel		
Checked By:	TOLERANCES UNLESS OTHERWISE SPECIFIED .000" - ±.031" .001" - ±.062" .0mm - ±.6mm .00mm - ±.16mm Angles ±1°	RiverRun Cabinetry <small>The contents of this material is confidential and the property of of Classic Distribution Inc. (CDI) and must not be used, reproduced, published or disclosed to others without express written consent of CDI.</small>	
Approved By: NH			
Unit of Measure (dual): Inches [metric]	MATERIAL	DRAWING NUMBER 002-80210	DATE 08/13/2024
SCALE 1:10	COLOR/FINISH	SHEET 1 OF 1	REV