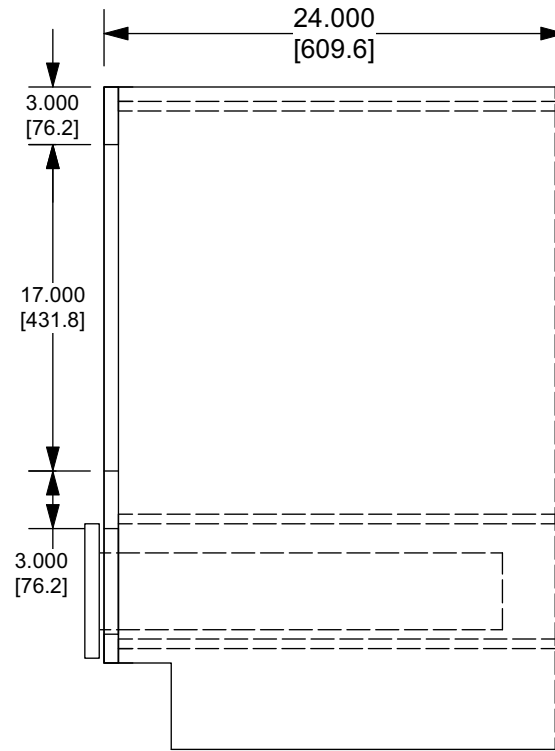


Front View



Side View

Custom Components:

- 1. End panels - 23.5" X 30"
- 2. Back - 26" X 30"
- 3. Frame - 27" X 30"

Customer: Ashland
 Style: Parkview
 Color: Sahara

Std. Components

- 1. Drawer Front - DF-DB27VESMUNF
- 2. Drawer box - 23.625" X 21"
- 3. Bottoms - FL-B27

Note:

This design is similar to the Base Microwave Drawer, however requires a larger oven opening and smaller drawer.

Rev	Description	Who	Date

Drawn By: NH	TITLE Base - Speed Oven 27"			
Checked By:	TOLERANCES UNLESS OTHERWISE SPECIFIED .007" - ±.031" .007" ±.062" .0mm - .5mm .00mm - 1.6mm Angles ±1°	RiverRun Cabinetry <small>The contents of this material is confidential and the property of of Classic Distribution Inc. (CDI) and must not be used, reproduced, published or disclosed to others without express written consent of CDI.</small>		
Approved By: NH				
Unit of Measure (dual): Inches [metric]	MATERIAL	DRAWING NUMBER 001-80501	DATE 010/10/2024	REV
SCALE 1:10	COLOR/FINISH	SHEET 1 OF 1		