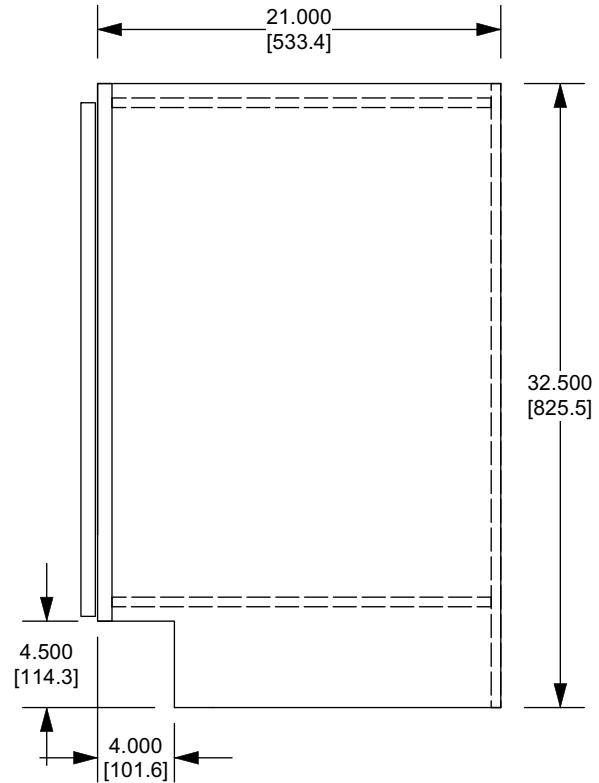
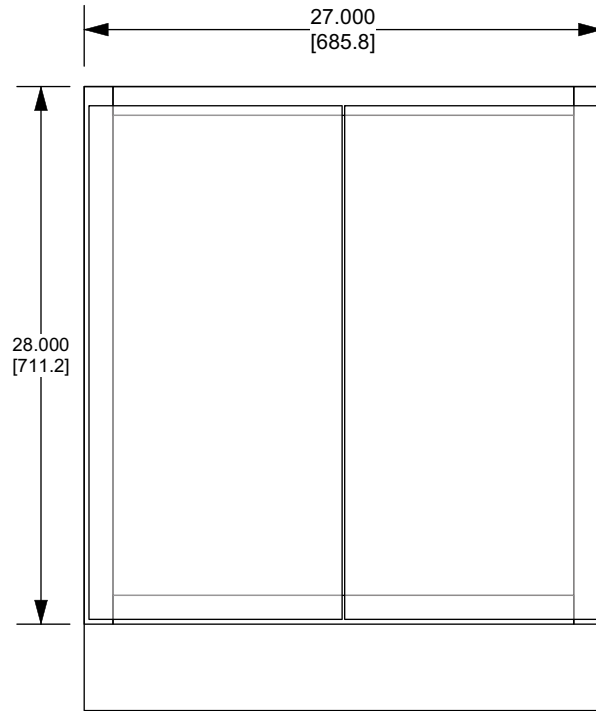


* This vanity product is intended for use when clear floor space is not an issue and a side reach (parallel approach with no obstruction) cabinet is acceptable to meet 305.5 ADA requirements.



Custom Components

1. Doors - 13.188" X 26.75"
2. End Panels - 20.5" X 32.5"
3. Back - 26" X 32.5"
4. Frame - 27" X 28"

Modified Components:

1. Floor - FL-B27 cut to 26" X 20.188"

Customer: Virginia Maid Kitchens
 Door: Cambridge MDF
 Color: White

Approved by: _____

Date: _____

Drawn By: NH	TITLE V27 ADA - 4.5" Toekick Side Reach			
Checked By:	TOLERANCES UNLESS OTHERWISE SPECIFIED .000" ±.031" .001" ±.062" 0mm - .8mm 00mm - 1.6mm Angles ±1°		RiverRun Cabinetry <small>The contents of this material is confidential and the property of of Classic Distribution Inc. (CDI) and must not be used, reproduced, published or disclosed to others without express written consent of CDI.</small>	
Approved By: NH	MATERIAL	DRAWING NUMBER 002-80409	DATE 9/16/24	REV
Unit of Measure (dual): Inches [metric]	SCALE 1:10	COLOR/FINISH	SHEET 1 OF 1	