

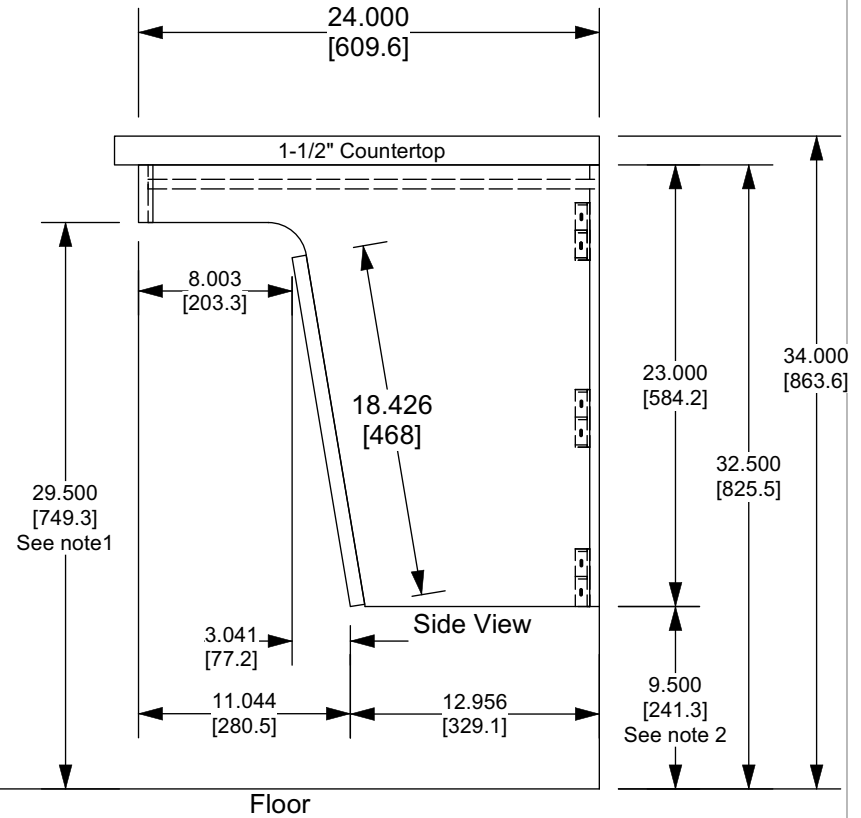


Solid front machined from a F330

6 brackets  
Stapled into  
back and End  
panels

3/4" Plumbing Panel

Front View



Customer: CMH Distributing  
Door Style: Cambridge  
Color: White

**Custom Components:**

1. End Panels - 23.5" X 23"
2. Back - 29" X 23"
3. Front panel - Door or flat 29.5" X 18.426"?
4. Front frame - F330 Filler

**Std. Components:**

1. None

**Notes:**

1. Federal code only requires 27" floor to sink clearance, but some state and local codes require 29". Therefore this design meets all (known) ADA requirements in the USA.
2. 1/2" additional clearance is provided to compensate for the possibility of additional floor coverings and/or non-level floors. It also allows for the cabinet to be lowered by 1/2" if a sink with a rim on it is chosen.

Rev	Description	Who	Date

Drawn By: NH	TITLE ADA Plumbing Sink Cabinet			
Checked By:	TOLERANCES UNLESS OTHERWISE SPECIFIED 000" - ±.031" 00" - ±.062" 0mm - ±.8mm 00mm - ±.16mm Angles ±1°	RiverRun Cabinetry		
Approved By: NH		The contents of this material is confidential and the property of of Classic Distribution Inc. (CDI) and must not be used, reproduced, published or disclosed to others without express written consent of CDI.		
Unit of Measure (dual): Inches [metric]	MATERIAL	DRAWING NUMBER 002-80525	DATE 03/12/2024	REV
SCALE 1:10	COLOR/FINISH	SHEET 1 OF 1		